



# Welcome to Gamesa Gearbox **Lerma**





## INDEX

Welcome

Directions

Site plan

Safety first

Accommodation

Restaurants

Local information

Activities



## WELCOME

Welcome to Gamesa Gearbox Lerma.

At our facility, we receive many visitors from all over the world.

We have created this welcome document to provide you with key information about Lerma and the surrounding area.

Stroll through the old town, enjoy its heritage and local food in a variety of restaurants. For nature lovers, go hiking and enjoy the beautiful scenery of the surrounding countryside or try practicing your game on the golf course.

We hope you enjoy your visit!





## DIRECTIONS

From Madrid

193 km | 1 h 53 min



From Bilbao

203 km | 2 h 8 min



From Pamplona

244 km | 2 h 31 min



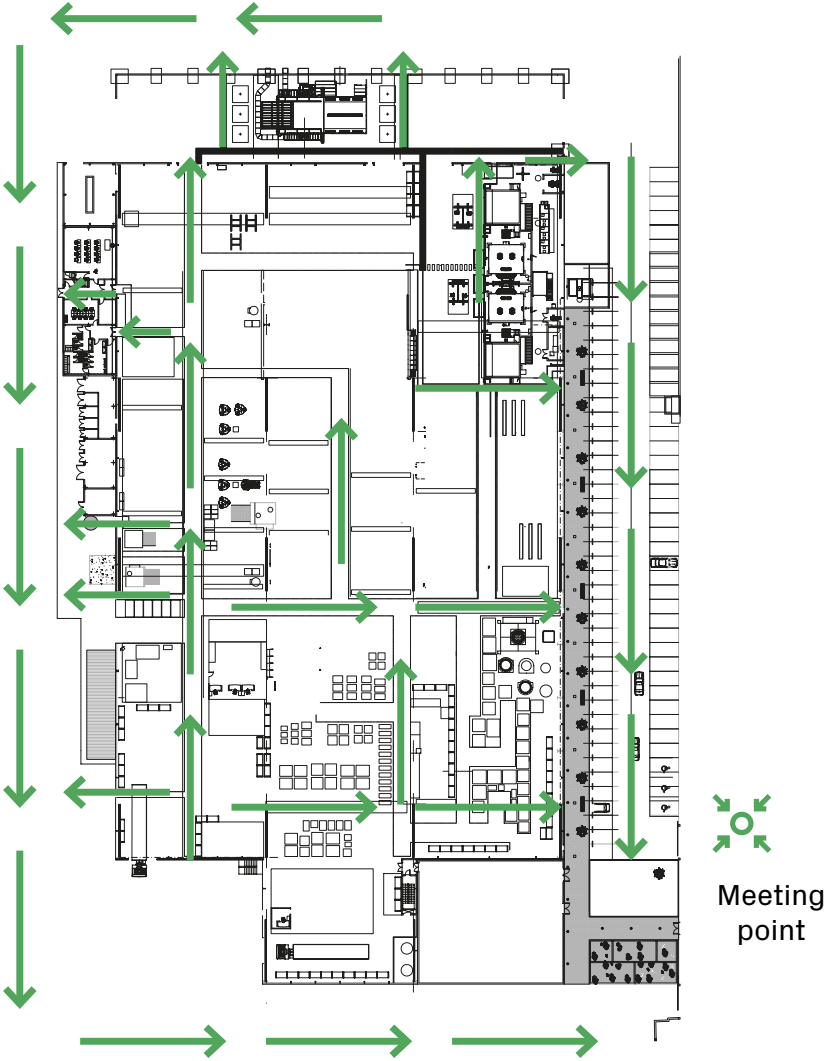
From Ágreda

197 km | 2 h 25 min



# SITE PLAN

## BUILDING





## SAFETY FIRST

1/2

### GENERAL RULES



Check in at the reception desk.



Wear a high-visibility vest and be accompanied by a person in charge.



Wear safety shoes.



You will need an authorization to access work areas.



Respect pedestrian and restricted areas.



No photography.







## SAFETY FIRST

2/2

### EMERGENCY RULES



Alarm signal. Leave the building following instructions. Stay calm, do not run. If you have forgotten something, do not come back to pick it up.

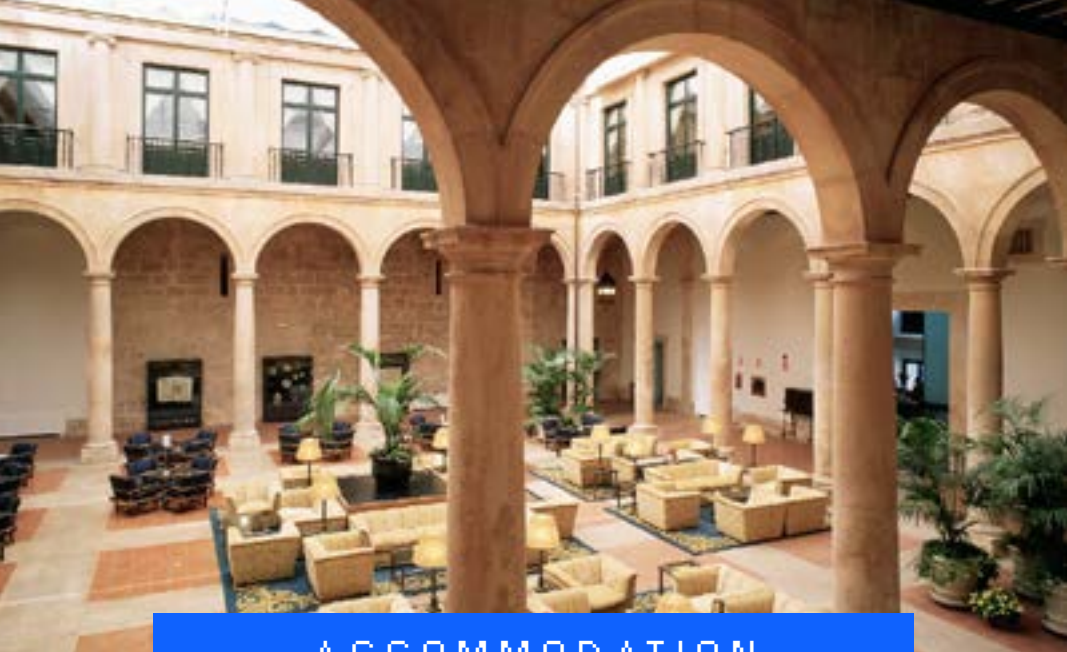


Use the evacuation routes following the signs.



Meeting point. Go to the meeting point following the signs. Wait at this point until further instructions.





## ACCOMMODATION

Parador  
de Lerma

+ INFO

Hotel La Hacienda  
de mi Señor

+ INFO

Hotel Bienestar  
Ceres

+ INFO

Hotel NH Collection  
Palacio de Burgos

+ INFO

Hotel ABBA  
Burgos

+ INFO







## RESTAURANTS

Restaurante  
Gloria

+ INFO

Restaurante  
Brigante

+ INFO

Asador  
Casa Antón

+ INFO

Asador  
Caracoles

+ INFO

Mesón  
Casa Lara

+ INFO





Centro de Salud  
de Lerma

+ INFO

Hospital Universitario  
de Burgos

+ INFO

BBVA Lerma

+ INFO

CaixaBank Lerma

+ INFO





## ACTIVITIES

1/8

### DUCAL PALACE LERMA

Taking advantage of the site of the old castle of the 15th century and built according to the designs of Francisco de Mora, it was conceived as a ducal dwelling.

+ INFO





## ACTIVITIES

2/8

### SAN PEDRO COLLEGIATE CHURCH

The parish of San Pedro was converted into a collegiate church by Pope Paul V. The south façade stands out for its monumental main gate.

+ INFO





## ACTIVITIES

3/8

### SANTO DOMINGO DE SILOS CONVENT

The Monastery of Santo Domingo de Silos is a Benedictine abbey located in the eastern part of a eastern part of a small valley

+ INFO







## ACTIVITIES

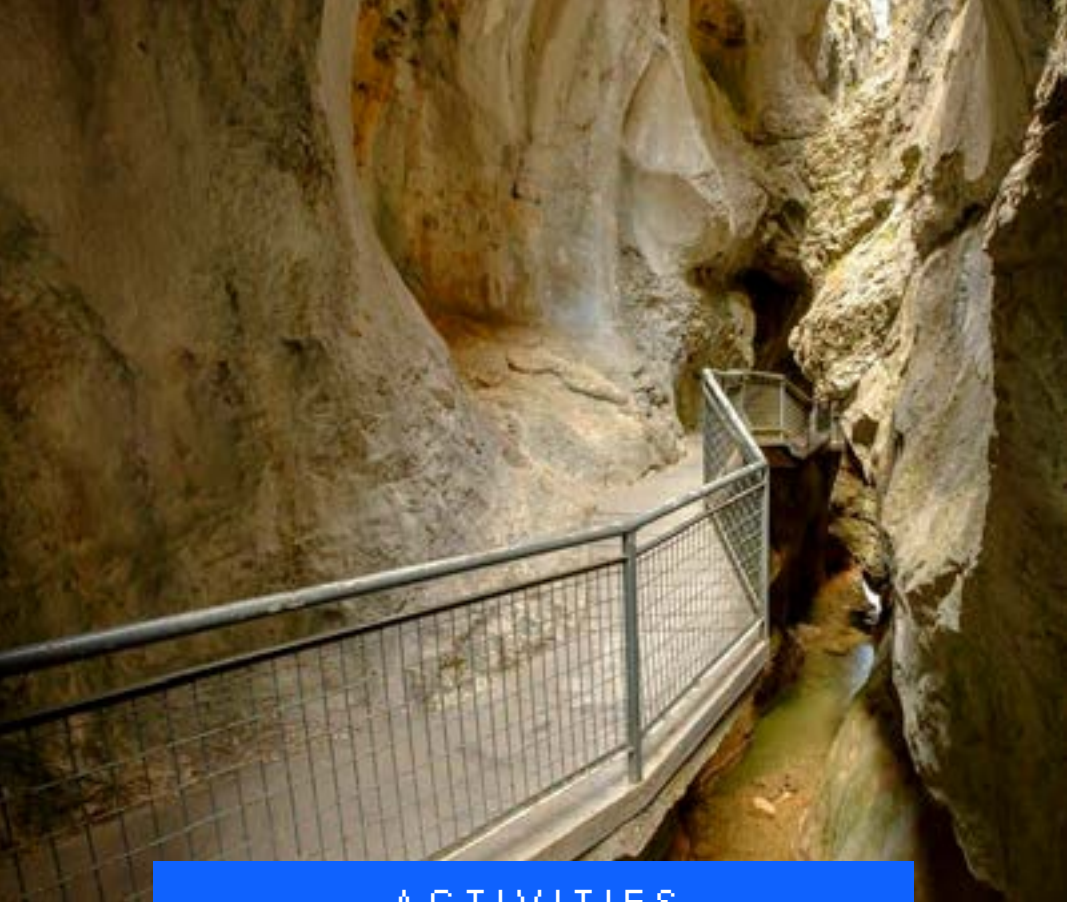
4/8

### COVARRUBIAS

Well-preserved urban fabric, together with an extensive monumental heritage, in which the Torreón de Fernán González (the only Castilian fortress before the eleventh century that remains) stands out.

+ INFO





## ACTIVITIES

5/8

### LA YECLA CANYON

La Yecla Canyon is one of the most attractive places in the province of Burgos. This natural park is located on the southwestern slope of the Sierra de la Demanda.

+ INFO





## ACTIVITIES

6/8

### GOLF LERMA

Built in 1992, the Lerma Golf Course combines in its 18 holes the grandiose simplicity of the Castilian nature and the amusing complexity of golf.

+ INFO





## ACTIVITIES

7/8

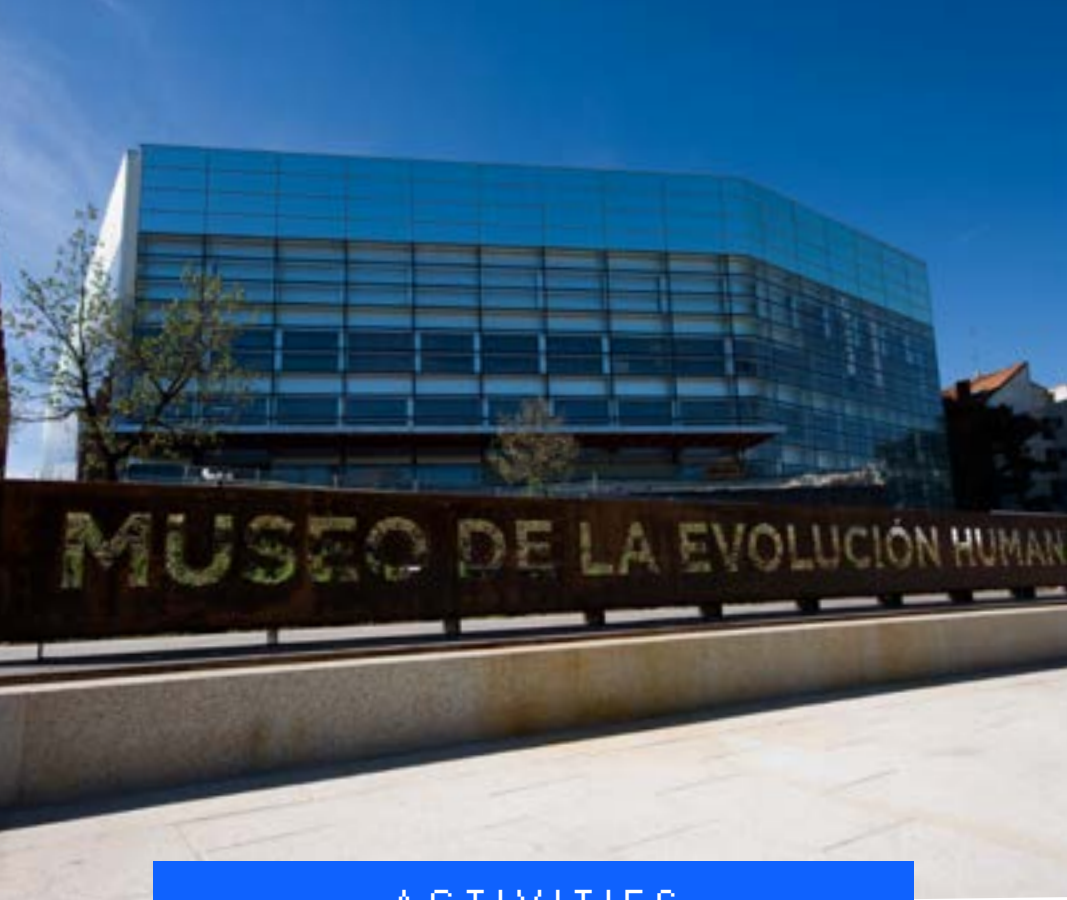
### BURGOS CATHEDRAL

One of the best examples of Gothic art in Europe. Its construction began in 1221, although in later centuries it underwent some modifications.

+ INFO







## ACTIVITIES

8/8

### HUMAN EVOLUTION MUSEUM

Located on the Paseo de la Sierra de Atapuerca, next to the Arlanzón river, it is one of the main recreational and leisure areas.

+ INFO

